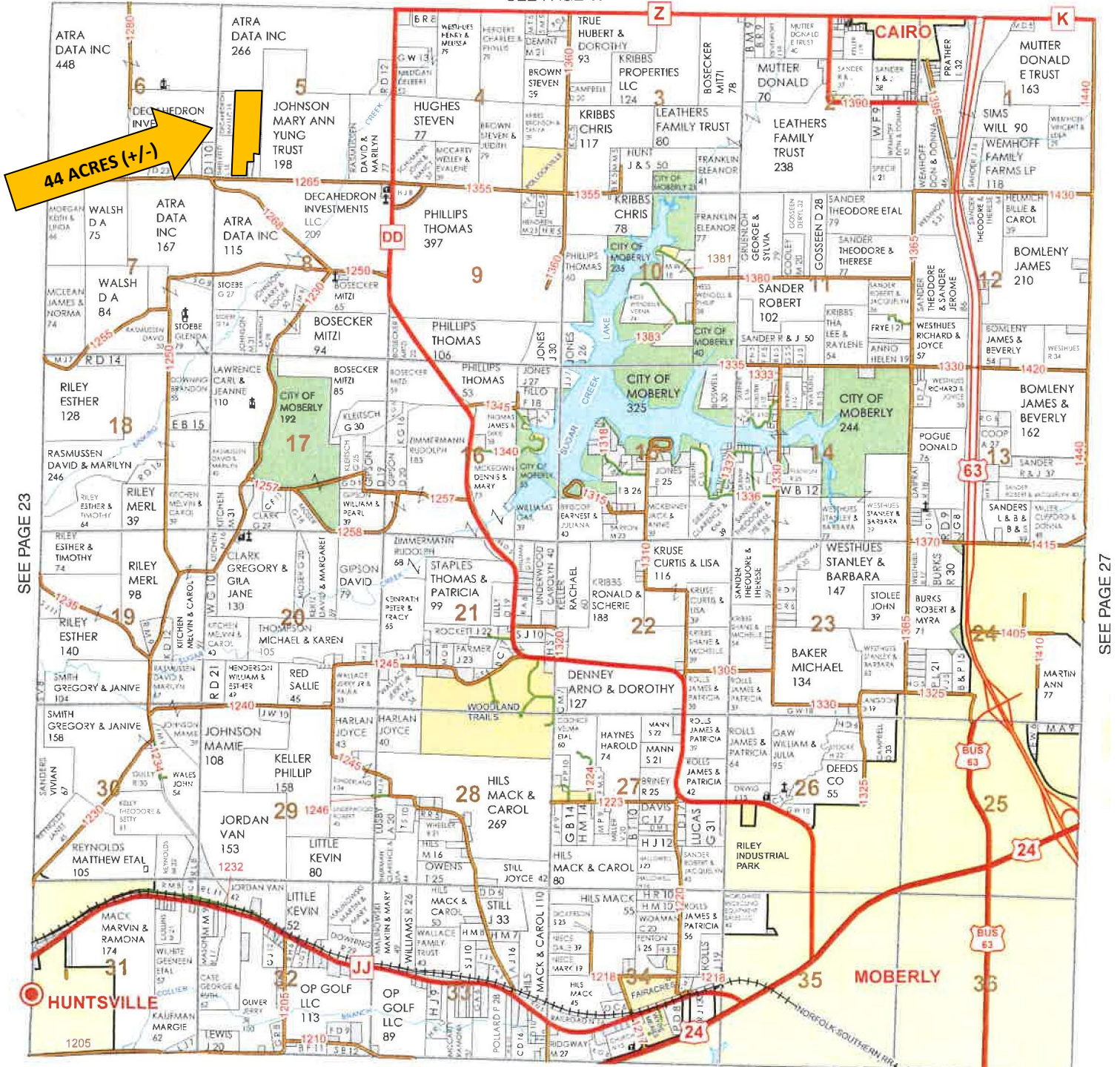


# PLAT MAP - 44 ACRES (+/-)

## SECTION 5 - TOWNSHIP 54N - RANGE 14W

### RANDOLPH COUNTY, MISSOURI

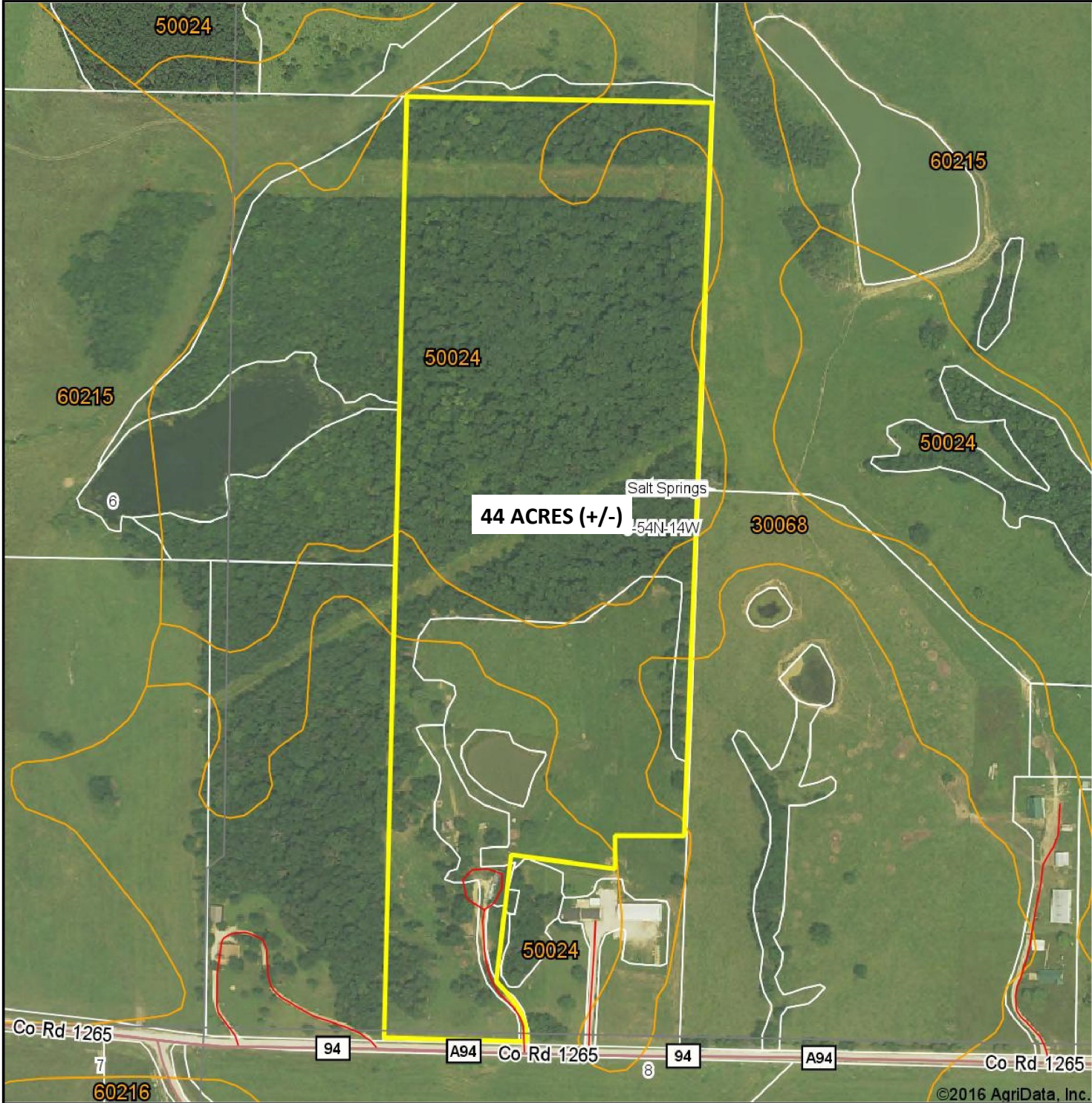
SEE PAGE 17



SEE PAGE 33



# Aerial Map



©2016 AgriData, Inc.

CSLA  
Central States Land & Auction

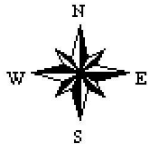
Maps Provided By:  
  
surety®  
CUSTOMIZED ONLINE MAPPING

© AgriData, Inc. 2016      www.AgridataInc.com

map center: 39° 30' 8.43, 92° 30' 43.7



**5-54N-14W**  
**Randolph County**  
**Missouri**

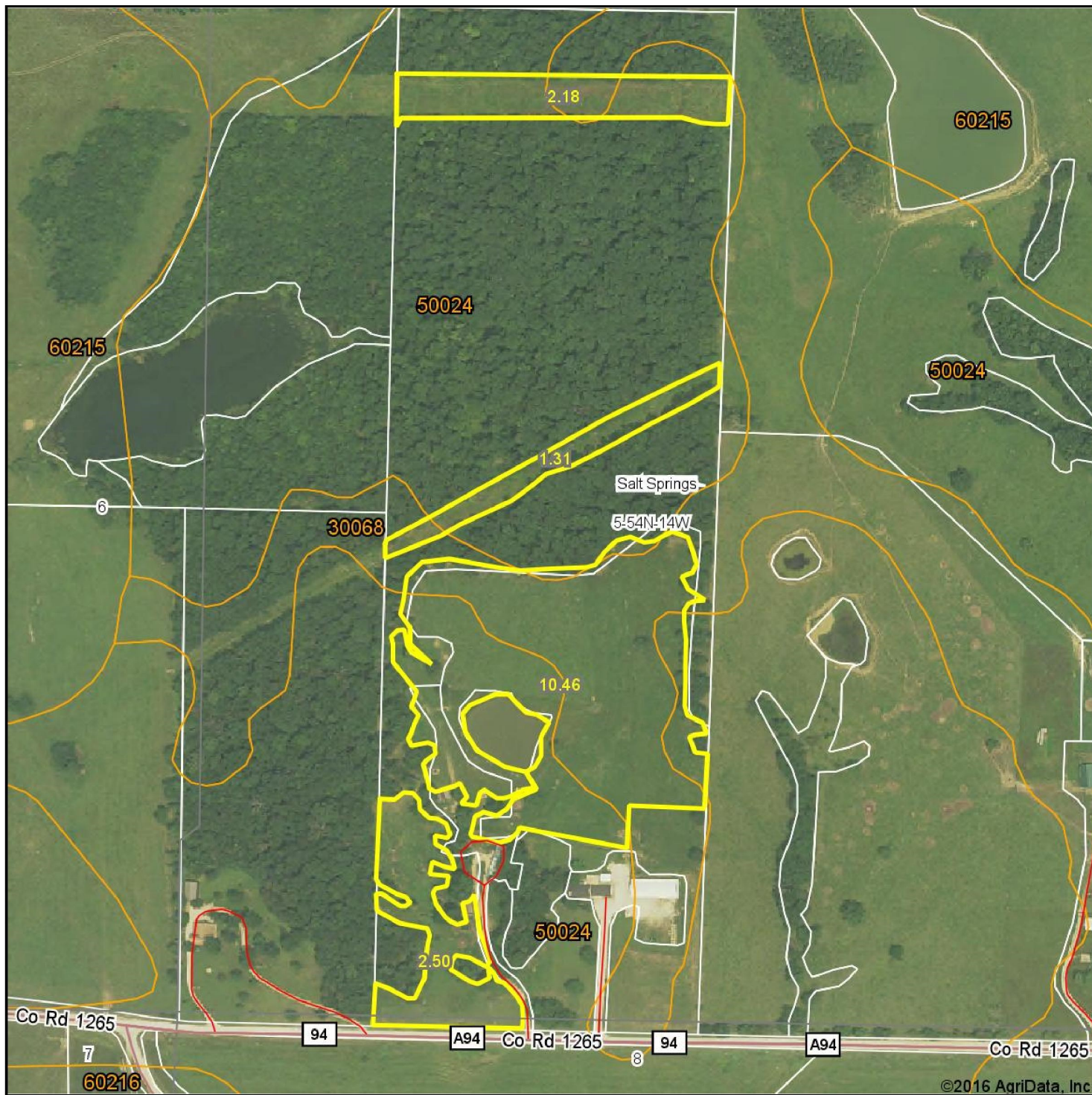


4/5/2016

Field borders provided by Farm Service Agency as of 5/21/2008.



# AERIAL MAP - 16 (+/-) OPEN ACRES



©2016 AgriData, Inc.

CSLA  
Central States Land & Auction

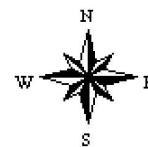
Maps Provided By:  
surety®  
CUSTOMIZED ONLINE MAPPING

© AgriData, Inc. 2016      www.AgriDataInc.com

map center: 39° 30' 7.1, 92° 30' 43.78

0ft      400ft      801ft

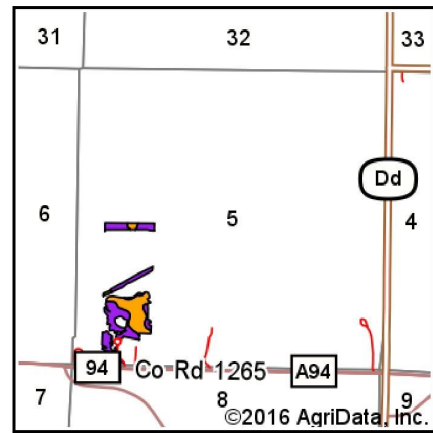
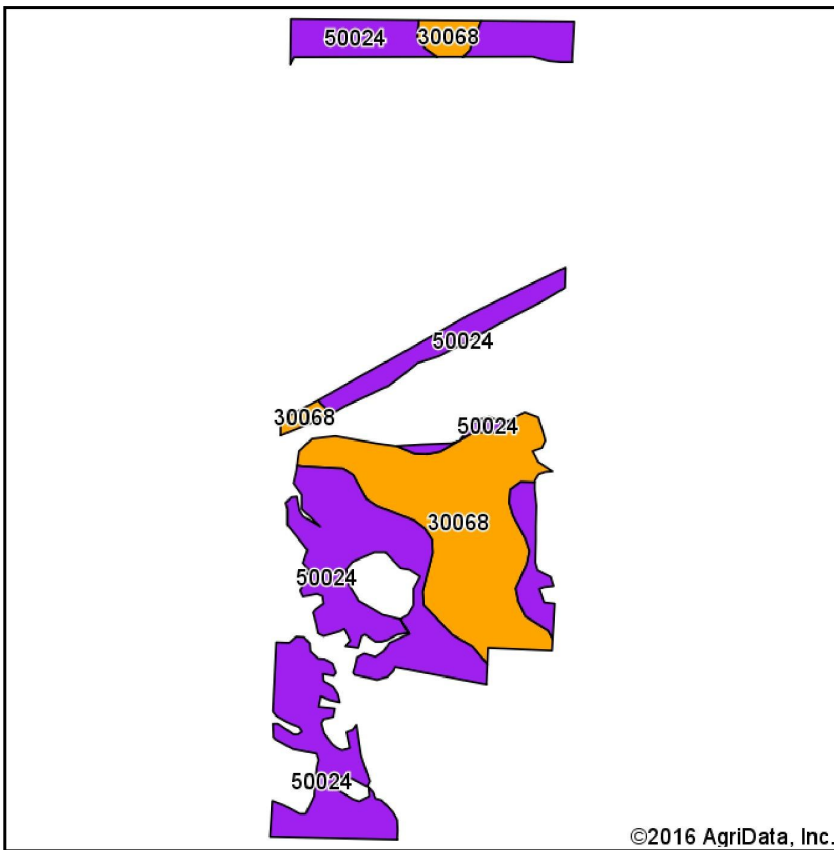
5-54N-14W  
Randolph County  
Missouri



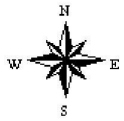
4/5/2016

Field borders provided by Farm Service Agency as of 5/21/2008.

# Soils Map



State: **Missouri**  
 County: **Randolph**  
 Location: **5-54N-14W**  
 Township: **Salt Springs**  
 Acres: **16.45**  
 Date: **4/5/2016**



Area Symbol: MO175, Soil Area Version: 14

Code	Soil Description	Acres	Percent of field	Non-Irr Class Legend	Non-Irr Class *c	Common bermudagrass	Caucasian bluestem	Warm season grasses	Alfalfa hay	Orchardgrass red clover	Tall fescue
50024	Gosport silt loam, 14 to 30 percent slopes, eroded	10.25	62.3%		Vle	4	7	7	4	6	5
30068	Gorin silt loam, 5 to 9 percent slopes, eroded	6.20	37.7%		Ille	6	7	7	4	7	6
<b>Weighted Average</b>						<b>4.8</b>	<b>7</b>	<b>7</b>	<b>4</b>	<b>6.4</b>	<b>5.4</b>

Area Symbol: MO175, Soil Area Version: 14

\*c: Using Capabilities Class Dominant Condition Aggregation Method

Soils data provided by USDA and NRCS.